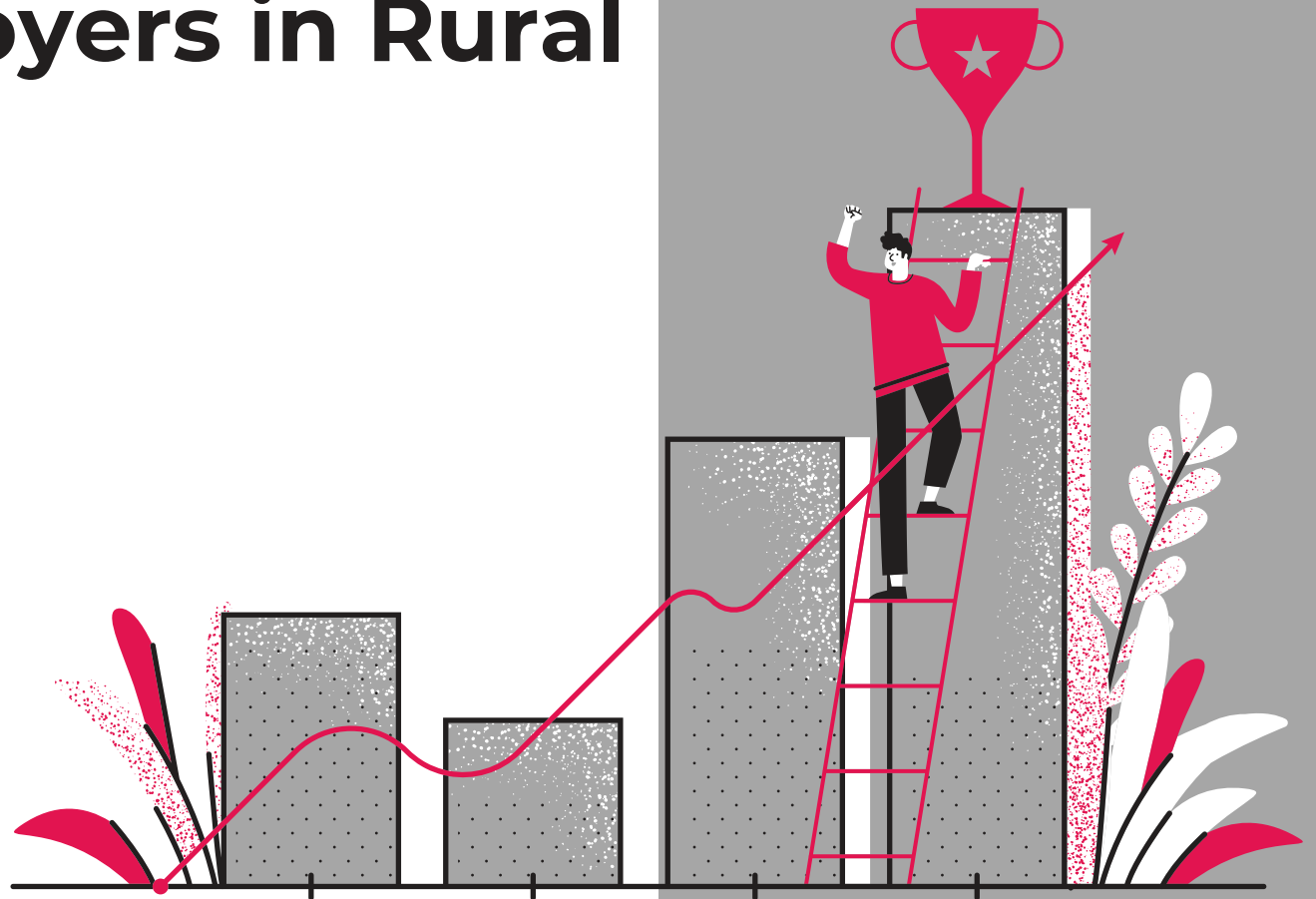


Access to Work-Integrated Learning for Students and Employers in Rural Regions

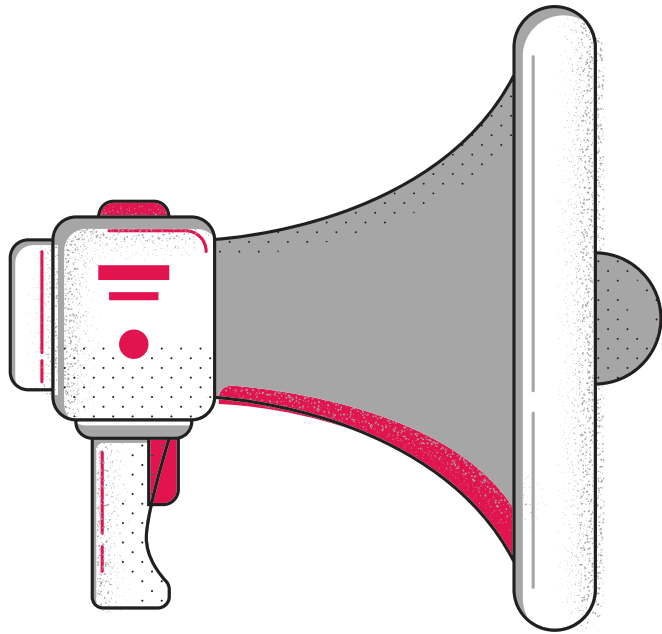


Alison Beaumont
Okanagan College



We respectfully acknowledge that the Okanagan College Penticton, Kelowna and Vernon campuses are located on the traditional and unceded territory of the Syilx Okanagan People, our Salmon Arm campus is located on the traditional and unceded territory of the Secwepemc, and our Revelstoke centre is located on the traditional and unceded territories of the Ktunaxa, Secwepemc, Sinixt and Syilx Okanagan Peoples.

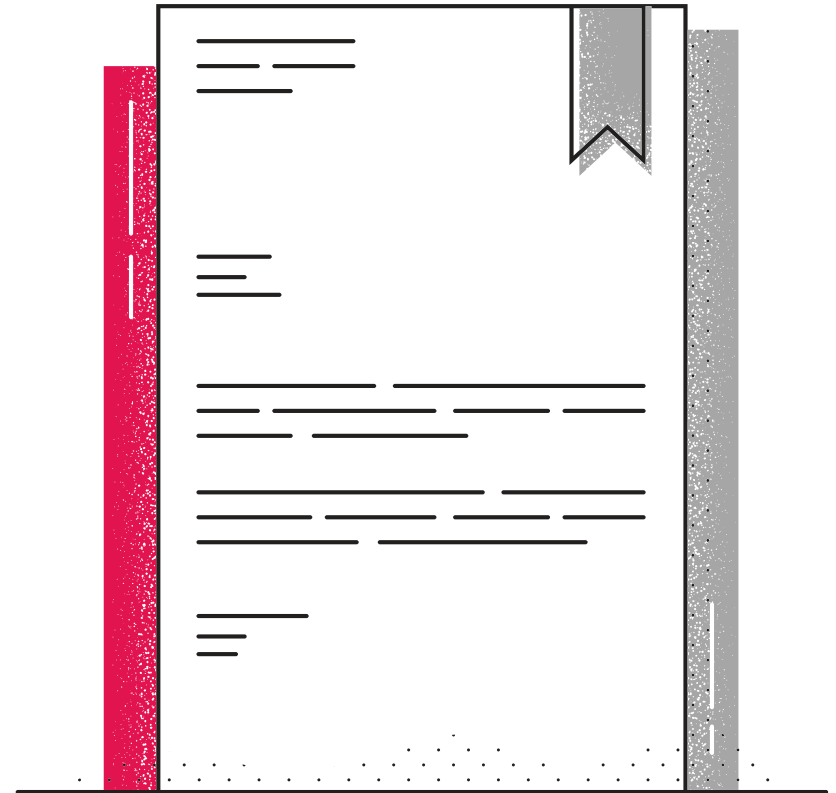




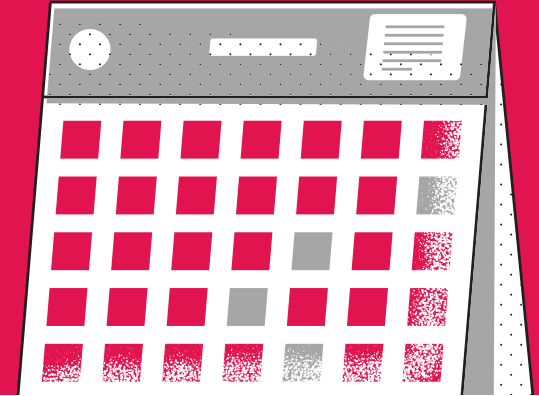
- **Overview**
- **Project Goals**
- **Our Impact**
- **Next Steps**

OVERVIEW

- Okanagan College serves the southern interior region from Osoyoos near the US Border to Revelstoke in the Kootenay Rockies.
- Only Co-op/WIL staff at Kelowna Campus
- Campuses/Centres in Penticton, Vernon, Salmon Arm & Revelstoke



PROJECT GOALS



STUDENTS

- Increase Co-op applications
- Increase Work-terms
- Increase Awareness of Co-op/WIL with students,, faculty & instructors

COMMUNITY

- Connect with High School Counsellors
- Outreach to community to offer programs and services

EMPLOYERS

- Increase awareness of WIL opportunities with OC students
- Support employers in finding relevant funding

ON-BOARDING

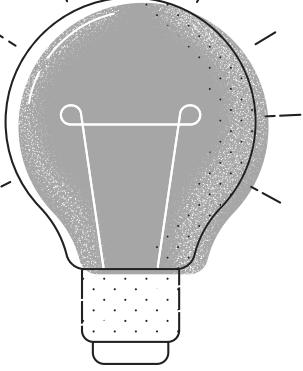
Hired 3 x 0.5 FTE Coordinators

Having staff join our team during remote working helped us to learn how to expand and support a team working remotely.

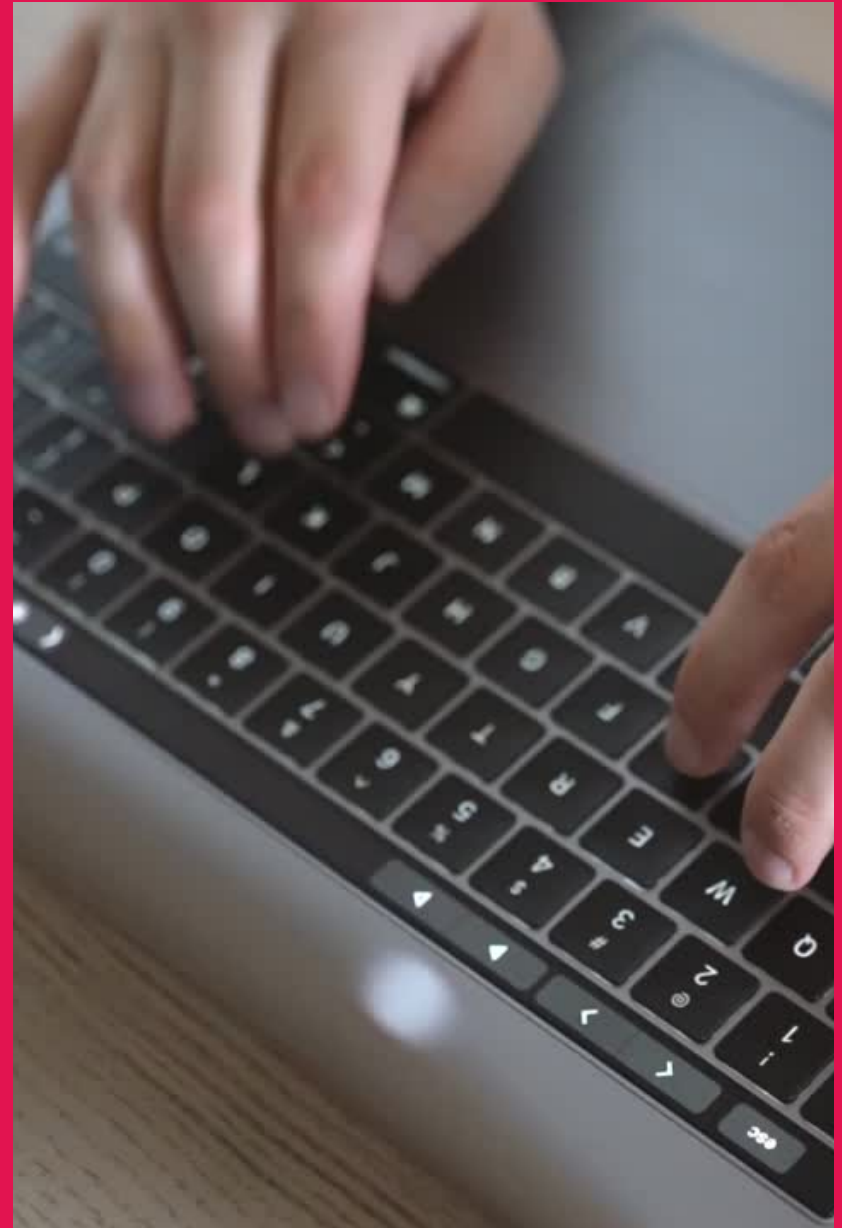


Connecting in a pandemic





- CRM, emails, webinars, workshops - all online
- Chambers of Commerce
- Internal Contacts Connected with Community
 - Aboriginal Services
 - Instructors & Faculty
 - Recruiters





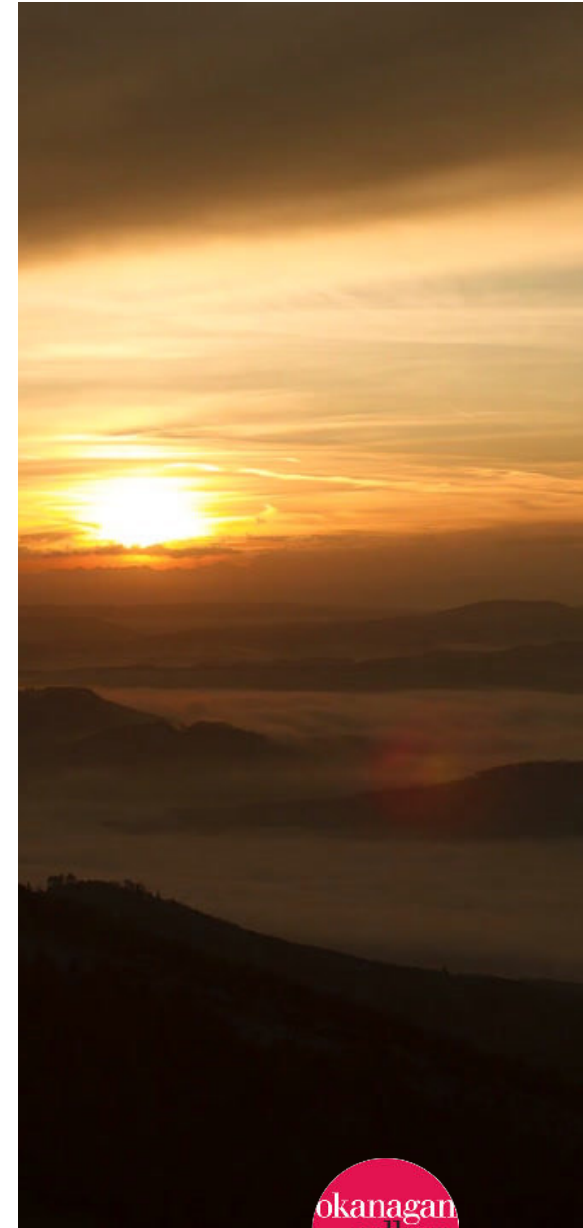
CO-WORKING SPACES

Working from co-working spaces in community allowed for incidental meetings, connecting with local businesses and keeping up to date with new start-ups

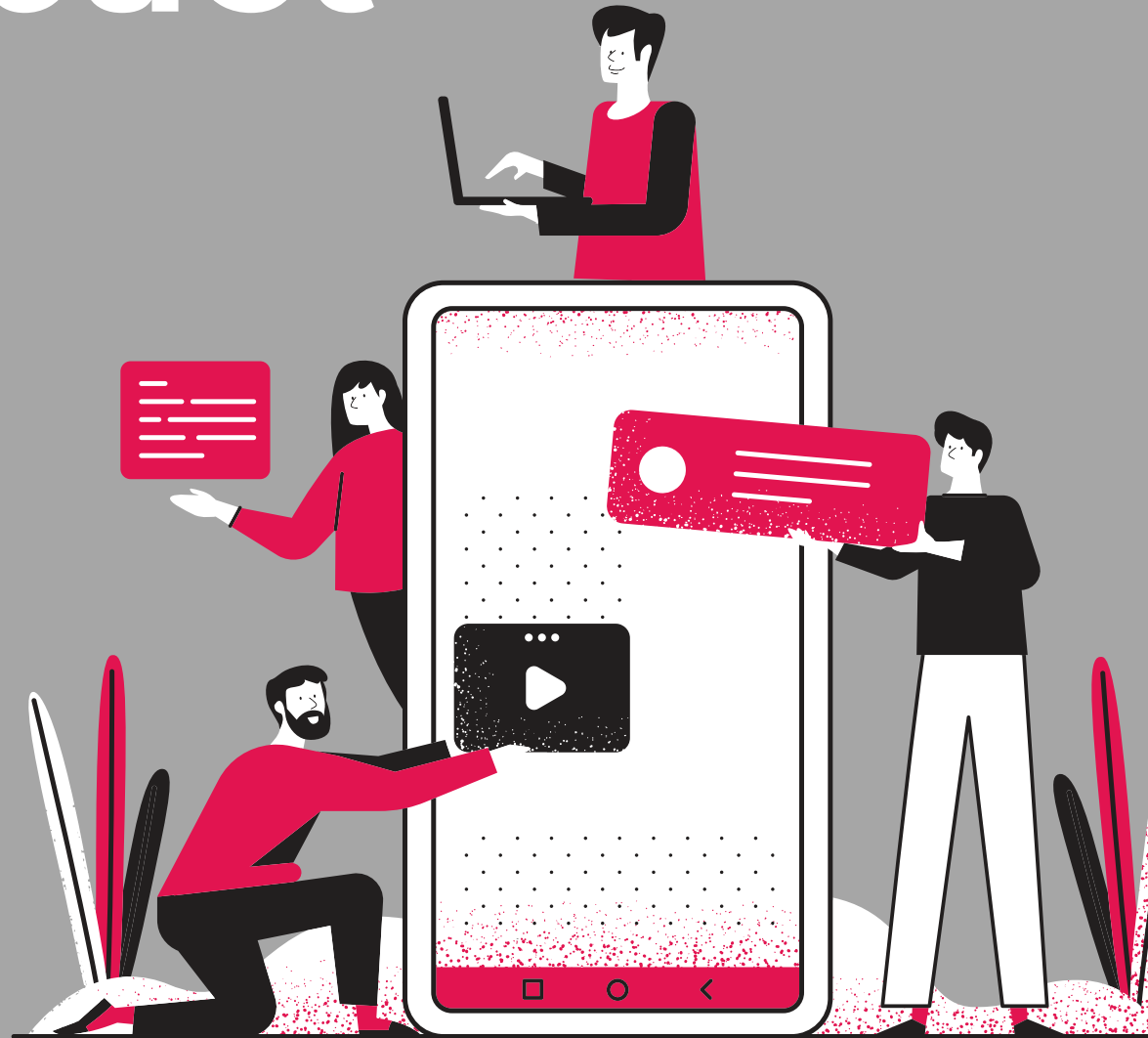


CONNECTING

We recognized that we needed to have consistent and reciprocal relationships with our First Nations communities, we decided not to have temporary staff make these connections.



Our Impact



HOW HAS HAVING REGIONAL WIL STAFF IMPACTED YOUR CAMPUS?

This kind of business connection and student integration into our local community has been invaluable. It allows for students to get connected to jobs, careers and discover entrepreneurship and for employers to find new skilled employees. With more students requesting this kind of service we would be delighted to have an on-going WIL coordinator who could further develop relationships between the campus and the business community so that OC become the “go to “ place for employers in the community when they look to expand their businesses

Jane Lister

Regional Dean North Okanagan, Okanagan College.





400% Increase in Employer contacts outside of Kelowna Area

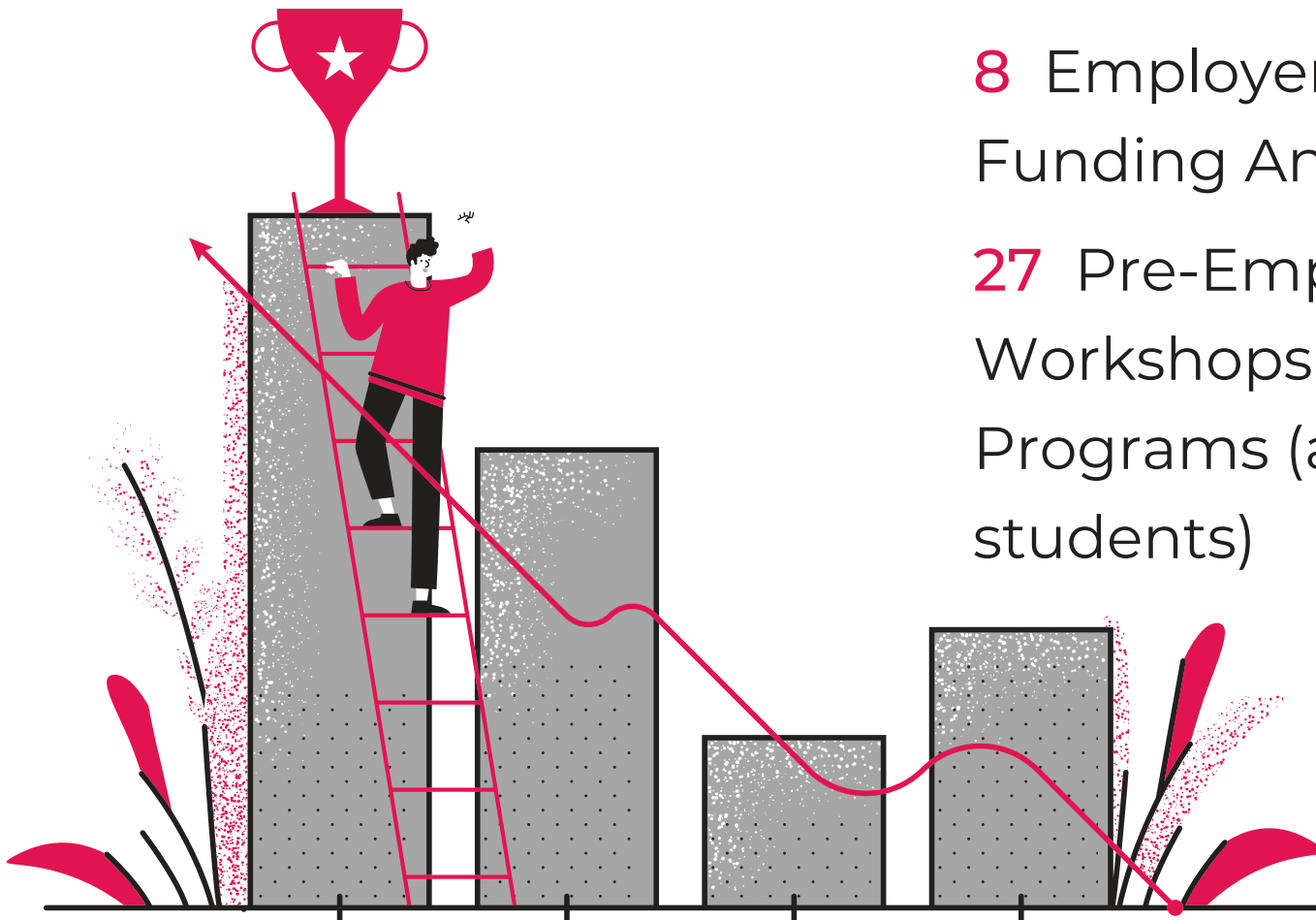
Maintained number of co-op work-terms outside of Kelowna with a slight increase

WORKSHOPS & EVENTS

22 Student Online Events

8 Employer Webinars on
Funding And WIL

27 Pre-Employment
Workshops for Vocational
Programs (approx 324
students)



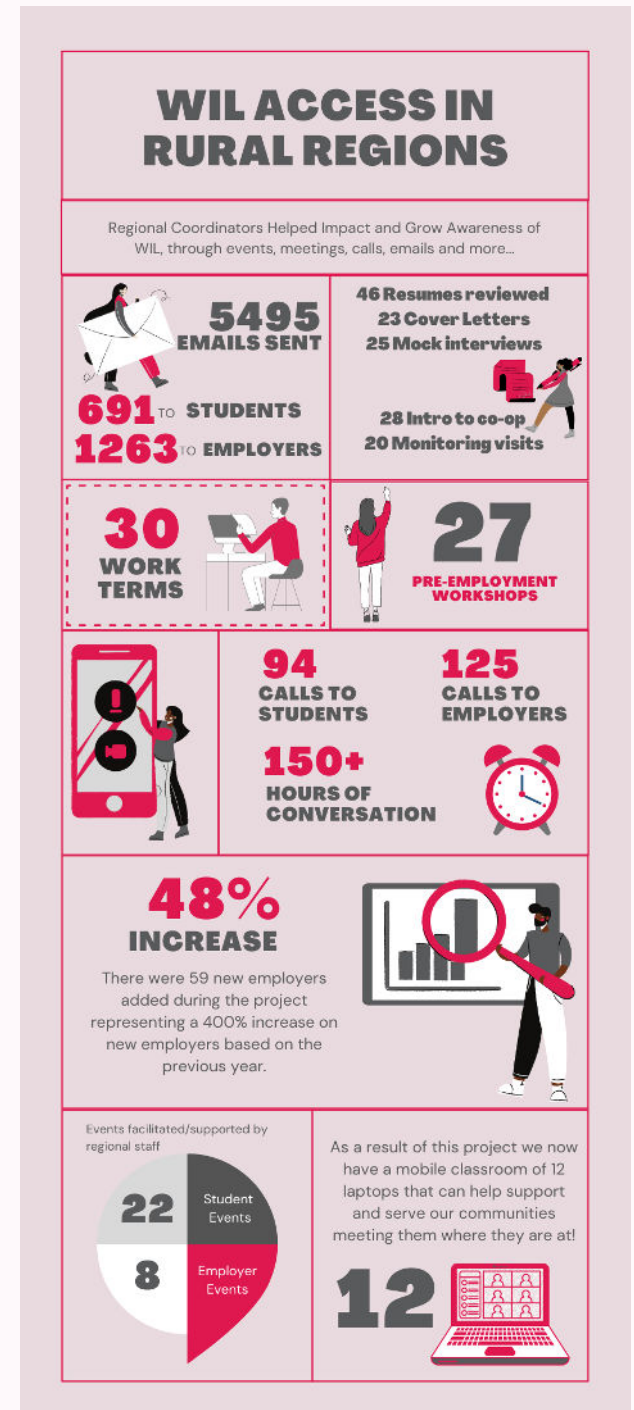


STUDENT CONNECTIONS

- 46 Resumes reviewed
- 23 Cover letters
- 25 Mock interviews
- 28 Introduction to co-op sessions
- 20 Monitoring visits

MORE METRICS

Created Infographic to help demonstrate the accomplishments of the project.





5495
EMAILS SENT

691 TO STUDENTS
1263 TO EMPLOYERS

46 Resumes reviewed
23 Cover Letters
25 Mock interviews



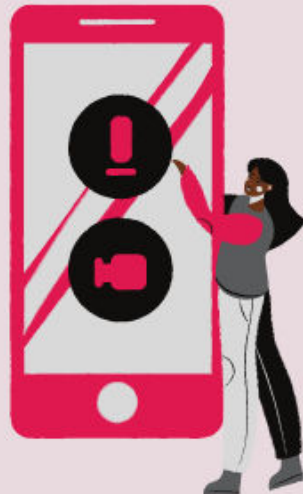
28 Intro to co-op
20 Monitoring visits

30
WORK
TERMS



27

**PRE-EMPLOYMENT
WORKSHOPS**



94
CALLS TO
STUDENTS

125
CALLS TO
EMPLOYERS

150+
HOURS OF
CONVERSATION



48% INCREASE

There were 59 new employers added during the project representing a 400% increase on new employers based on the previous year.



Events facilitated/supported by regional staff



As a result of this project we now have a mobile classroom of 12 laptops that can help support and serve our communities meeting them where they are at!

12





NEXT STEPS

LEARN

There is a need to have permanent staffing to serve all of college region, and have justification for this need.

Must have resources and technology for consistent and meaningful outreach to communities.

Lack of knowledge of forms of WIL by Students, Internal Stakeholders, Community & Employers.



MOVING FORWARD

More Funding Recieved to continue work into 2022, engaging more rural employers with funding and WIL opportunities, 3 x 0.6 FTE positions.

Connecting with more forms of WIL at Okanagan College with a WIL Outreach Coordinator. Utlizing software.

12 Laptops purchased from this project will be used in delivery or workshops to support community and connect with WIL potential.





QUESTIONS



Alison Beaumont
abeaumont@okanagan.bc.ca